

# SGS

Certificate US18/81827349.00

The management system of

## Imperial Plastics, Inc.

21400 Hamburg Ave W  
Lakeville, MN 55044, United States

has been assessed and certified as meeting the requirements of

## ISO 9001:2015

For the following activities:

**Thermo-plastic injection molding and related fulfilment for various industries**

Further clarifications regarding the scope of this certificate and the applicability of ISO 9001:2015 requirements may be obtained by consulting the organization.

This certificate is valid from 18 May 2019 until 18 May 2022 and remains valid subject to satisfactory surveillance audits. Recertification audit due a minimum of 60 days before the expiration date. Issue 3: 3 May 2019. Certified since May 2016.

The audit leading to this certificate commenced on 25/02/2019. Previous issue certificate validity date was until 18/05/2019.

This is a multi-site certification. Additional site details are listed on subsequent pages.

Authorized by

*Christopher Malone*

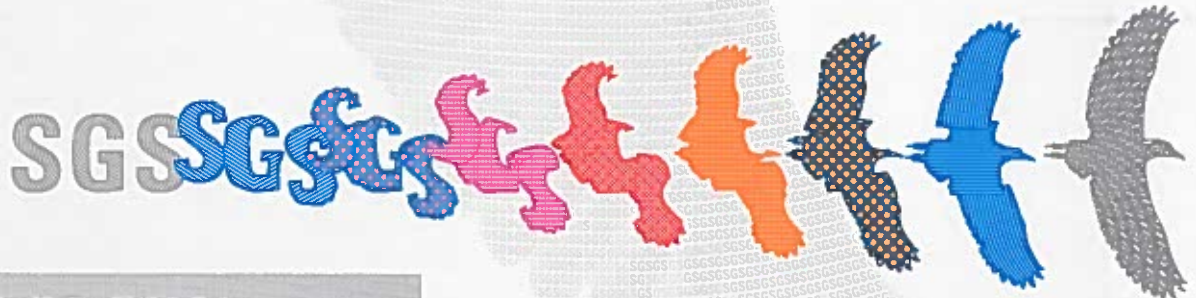
Christopher Malone  
Vice President, Certification & Business  
Enhancement North America  
SGS North America, Inc.

201 Route 17 North, Rutherford, NJ 07070, USA  
t (201) 508-3000 f (201) 935-4555 [www.us.sgs.com](http://www.us.sgs.com)

This certificate remains the property of SGS and shall be returned upon request



Page 1 of 2





# Imperial Plastics, Inc.

## ISO 9001:2015

Issue 3: 3 May 2019



**Additional facilities:**

**21400 Hamburg Ave W, Lakeville, MN 55044, United States**  
**Scope: Engineering and Sales**

**1020 E Maple Ave, Mora, MN 55051, United States**  
**Scope: The manufacture, fabrication and painting of injection, gas assist, and structural foam molded thermoplastic**

**21350 Cedar Ave., Lakeville, MN 55044, United States**  
**Scope: Warehouse and Assembly**

**21320 Hamburg Ave W, Lakeville, MN 55044, United States**  
**Scope: Thermo-plastic injection molding and related fulfilment activities for various industries**

**601 Industrial Parkway, Mora, MN 55051, United States**  
**Scope: Warehouse**

